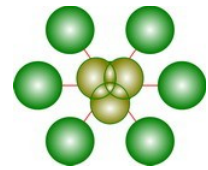


High-Performance Structural Framing News



**Composite
Building
Structures, Ltd**

Emerging Markets

As America struggles to grow from 1,500 housing starts each day to a past high of 6,800 starts, CBS looks to expand its opportunities offshore. Revitalizations in Haiti, Chile, Guatemala, Indonesia, Philippines, Peru, and Pakistan are examples of where CBS could set up

recovery Assembly Plants.

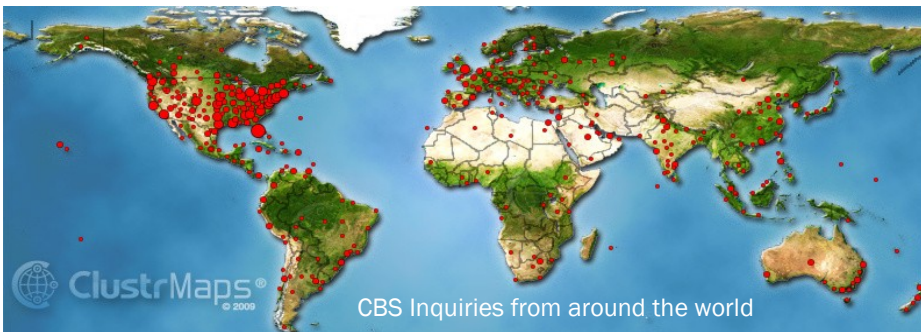
CBS has worked with design specialists of single and multi-level homes, motels, schools, medical, correctional, and agricultural buildings to use our composites.

Alternative energy sources and the CBS "Hot-Roof" are an integral

part of the new designs.

Self-contained Terrarium Community designs provide family services within a 5 minute walk eliminating grid layouts.

CBS oversight melds these alternatives and many professionals to bring together best building practices.



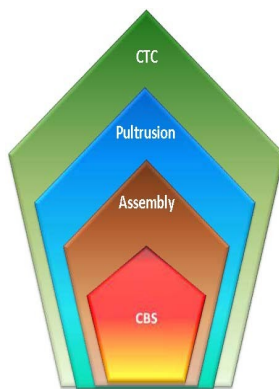
3rd Quarter 2010



Protection Against

- Hurricanes
- Tornados
- Floods
- Fires
- Termites
- Rodents
- Electrical Storms
- Mold & Mildew

Funding



For CBS to achieve the next level in its growth and expansion, several millions of dollars will need to be spent.

Equity and loan funds seem to be loosening up just as CBS begins the process of partnering on

assembly plant projects and on new composite applications capable of growing into Construction Technology Centers.

Setting up several such centers requires an open access to funds required to hire, equip, train, and begin in each location.

We believe that after 6 years of development our new paradigm in panelizing with **Egis®** structural framing is ready to start and be promoted globally.

Working with strategic alliance partners and financial sources our staffing in domestic and foreign markets is the

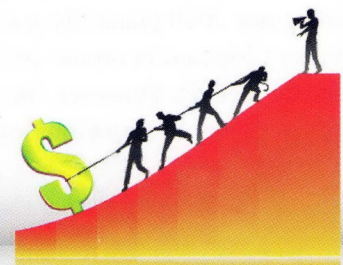
start to our growth.

By careful timing of each step, Construction Technology Centers can open with sufficient orders to run at near full capacity.

At capacity production lines can produce 50 large disaster resistant homes or 200 export (very low cost small social houses) each day.

We are now poised to ramp up the business plan and meet projections that have been the guiding lights for our progress.

A new era is coming and CBS hopes to be at the forefront starting a new Epoch in building.



Researching

At the CBS Research and Assembly center in Fort Myers FL, work has proceeded to finish the LED lighting sys-

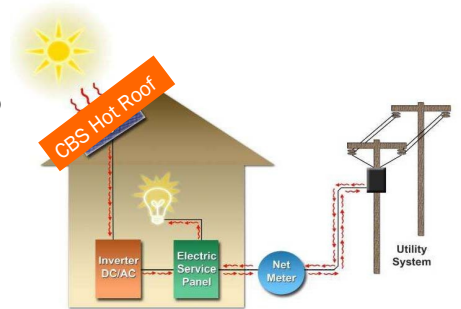


tem that provides 750 lumens of light for an energy cost of 100 watts.

This ceiling or wall mount system is to be powered either by a low cost solar panel system or by the unique CBS "Hot Roof" invention, which converts the roof's surface solar heat into electrical energy without the use solar panels or wind generators.

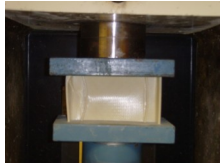
The development of this CBS alternative energy system will be unveiled simultaneously with issuance of the domestic patents and

international patents pending that surround this inventive "Hot Roof" electrical generating system.



Testing

Three panel systems have now been identified to run through certification testing. Quotations from suppliers have enabled CBS to be cost effective in quoting hurricane/tornado resistance, ballistic resistance, and infestation resistance.



Test equipment is being set up at our center that will enable CBS to approve

"Never doubt that a small group of thoughtful citizens can change the world. Indeed it is the only thing that has!"
- Margaret Mead

materials prior to ASTM testing. New panel fasteners will speed assembly times 10 to 20%.

Testing for certification and new testing will establish CBS span and load tables. Span tables provide the spacing information between structural members so engineers and architects can specify how any wall, floor, cantilever, and roof systems in their projects are to be built.

Around the world, span tables are well accepted and relied upon for such structural performance.

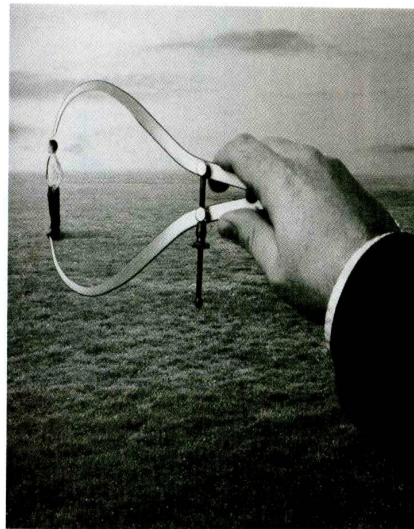
Staffing

We are optimistic that in the 4th quarter CBS can begin searching to fill key positions in Management, Sales & Quotations, Production & Panel building, Marketing & Drafting, Internet & Secretarial, and R&D & Testing.

In addition, CBS will look to form more strategic alliances with architects and construction engineers as well as new material suppliers.

In keeping with our joint venture plans to design, engineer, train, and set up Construction Technology Centers, CBS will bring together specialists that have built medical, correctional, agricultural, and self sustaining communities to broaden the uses of

composites in construction providing a seamless add-on business for CBS.



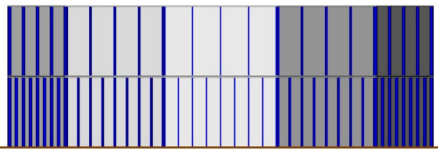
We anticipate, that in a short time, a number of skilled associates must be identified, recruited, and trained as the United States business conditions recover. It is crucial that each hire be an exceptional fit with the culture and vision of CBS.

We will try to prioritize and find both full and part time associates with prior experience in assembly line production and supply logistics.

Inquiries have to be followed up with sales quotations, drawings, and legal documents. New promotion materials will display CBS advances with updated internet presence, videos, blogs, on-line magazines, social media, and print articles.

Building

CBS was selected for a project on new ways to build large enclosures for storing harvested grain. The grain usually needs to be dried for storage. James Antonic had designed a rice drying project for Malaysian rice to eliminate the cracking of grain, which lowers the selling price. His practical experience enabled CBS to design a



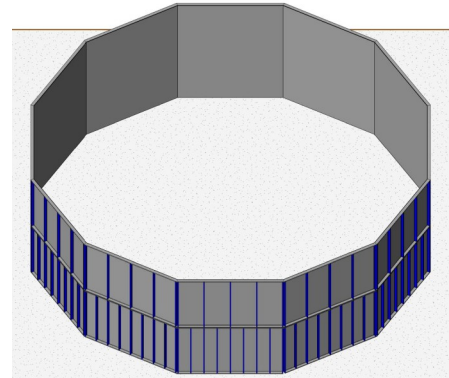
large silo enabling grain to be dried externally or internally using this shape.

This design holds 1,800 tons of grain and we are told that the prices we have quoted are very competitive and acceptable.

Using these designs, small to very large silos can be made on the new CBS vertical assembly jig lines without slowing down the line speed.

Using composite frames and panels creates a sealed sanitary storage facil-

ity easily transported and erected on site opening new off-shore markets



Panelizing

CBS has had built the first double vertical panel assembly line jigs that enables workers to build on both sides of panels on both sides of the jig frame at the same time.

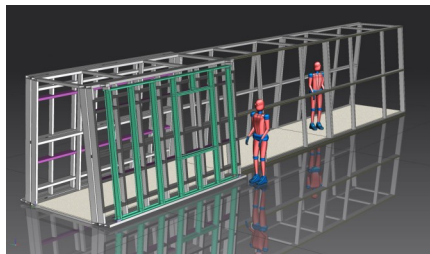


This practical solution greatly reduces the massive space previously allocated to build panels horizontally.

As a steward for energy reduction,

“Persistence and determination alone are omnipotent, with both of these, succeed you will!”

- Calvin Coolidge



all electric motors previously required to power long semi-completed panels were eliminated requiring electricity only for in-plant lighting and re-charging of the electric screw guns.



All parts are correctly sized and ready to assemble when they are received.

Patenting

CBS now has 38 issued intellectual properties surrounding the two CBS structural support systems. The first system is our 5th generation designed to assemble disaster resistant buildings shells; the second system is our 6th generation designed to quickly assemble very low cost social housing shells, also resistant to disasters.



Generation 5 is the all-in-one solution to the major disaster problems facing the building industry; hur-

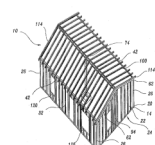
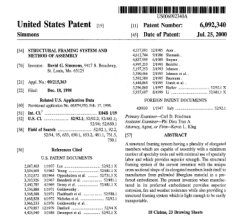
ricanes, tornados, earthquakes, floods, mold, and infestations.

Generation 6 is a structural system to frame an entire protective building; floor, roof, and interior walls. This system features the use of low cost local materials that are supported by a framework of CBS optimized composites. Generation 6 was designed as an export product for containerization as panels, kits, or bulk parts for countries with large social housing deficits.

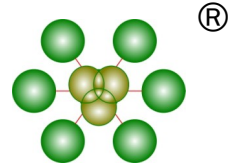
With both systems all the parts are precision pre-cut to fit together like

Lego blocks. A standard container will hold panels for three 400 square foot (37 sq m) homes, 60 kit homes, or bulk parts for 90 homes ready to assemble using battery operated screw guns.

With the addition of the 6th generation patents, CBS now owns or controls all the composite home structural framing patents in the United States.



Composite Building Structures Ltd.



15880 Summerlin Road #300-143
Fort Myers, FL 33908

941-870-4413 Phone
941-870-4795 Fax
Sales@CBS-Homes.com E-mail

www.CBS-Homes.com

www.CBS-Architects.com

www.CBS-Builders.com

www.CBS-Homeowners.com

Building Beyond Green

**"We shape our dwellings
and for many years after
our dwellings shape us."**

— Winston Churchill

Planning Growth

All successful consumer products are factory made at lowest cost, pass raw material and QC checks, and have consistently high quality. Each plant strives to have its products become the most preferred among their competitors.

For over 200 years the automotive industry has been pushing the leading edges of assembly technologies. Their revolution in dividing a complex automobile into a simple number of sub-assembled components and their methods to integrate them on a final assembly line is modeled in all other industries except housing.

Yet, continuously expanding populations creating continuous housing needs can not keep up with population growth or make a dent in past deficits. Hardly any of the assembly

line knowhow has been adapted in building. This intransigence has resulted in the consumption of excessively large quantities of natural resources, worldwide.

In the past 400 years, only band aid solutions for disaster mitigation, energy minimization, infestation control, mold growth, and overall quality have been applied. Never has home building been viewed as a simple assembly of semi-integrated sub-assembled components.

Housing is still primarily built stick by stick, on site, often using semi supervised low skilled labor to assemble materials that were delivered unchecked, dumped, and left exposed to all elements at the site.

This would be unacceptable in any other product, but apparently is not

for the most expensive purchase of a lifetime.

It is long overdue for the housing market to reformat its methods and components based on current materials and assembly methods. It is time to do better. CBS can do better. We can conserve natural resources, lower costs, improve quality, and save energy in the process.

We must lead with new designs, new components, and with new universal parts that fit together quickly as it is now done in every major industry except housing. An overseeing management hub is needed to coordinate material, quality, and process.

The CBS Construction Technology Center provides such management coordination and opens opportunities for part suppliers and component engineers to work synergistically.

The structural shell is the most important part of every building and Egis®-panels create the longest lasting protective building envelope that money can buy.

CBS produces composite structural support framing with superior strengths optimized to replace wood, concrete block, and steel building materials.

Composite studs and shapes are assembled into panels on automotive style production lines resulting in superior walls produced quickly with minimal labor that are straight and square.

Parts have all been precision cut during their continuous manufacturing process. They are laid out in support framing patterns and connected.

Structural framework using CBS Egis® composites achieve low initial costs for the buyer and low monthly costs of ownership.

Every wall, floor, and roof panel is made under constant quality control inspections.

Factory authorized crews erect, anchor, and strap the structure for builders to finish.

Optimized Construction Composites withstand 350 MPH winds and earthquakes. They are termite, rodent, fire, water, and mold resistant.

CBS composites do not conduct or attract electricity. They are electronically transparent so that all WiFi works without interference.

Every CBS production line becomes an anchor for a Construction Technology Center (CTC) to evolve where part suppliers can locate and supply in volume.

CBS Egis® materials will soon become

"The Framing Material of Choice—Worldwide"